

VM imajın Açılması ve Postgresql Veritabanına Eriřim

1- Virtualbox sanallařtırma uygulamasının kurulumu

2- Sanal makinenin import iřlemi

3- Putty (SSH client/istemci) kurulumu

4- Pgadmin (postgresql client/istemci) kurulumu, postgresql'e baęlantı ve sorgulama

1-Virtualbox sanallaştırma uygulamasının kurulumu

<https://www.virtualbox.org/>

Sitesinden virtualbox indirilip aşağıdaki adımlar izlenerek kurulumu tamamlanır.

virtualbox.org

VirtualBox

Welcome to VirtualBox.org!

VirtualBox is a powerful x86 and AMD64/Intel64 virtualization product for enterprise as well as home use. Not only is VirtualBox an extremely feature rich product for enterprise customers, it is also the only professional solution that is freely available as Open Source Software under the terms of the GNU General Public License (GPL) version 3. See "About VirtualBox" for an introduction.

VirtualBox runs on Windows, Linux, macOS, and Solaris hosts and supports a large number of guest operating systems including but not limited to Windows 10, XP, Server 2003, Vista, Windows 7, Windows 8, Windows 10), DOS/Windows 3.x, Linux (2.4, 2.6, 3.x and 4.x), Solaris and OpenSolaris.

VirtualBox is being actively developed with frequent releases and has an ever growing list of features, supported guest operating systems and platform architectures. It is a community effort backed by a dedicated company: everyone is encouraged to contribute while Oracle ensures the product always meets the highest quality standards.

Download VirtualBox 7.0

Build virtual machines for developers at [Oracle Tech Network](#)
VirtualBox Open-source Virtual Infrastructure Manager [project site](#)
VirtualBox AJAX web interface [project site](#)

VirtualBox

Download VirtualBox

Here you will find links to VirtualBox binaries and its source code.

VirtualBox binaries

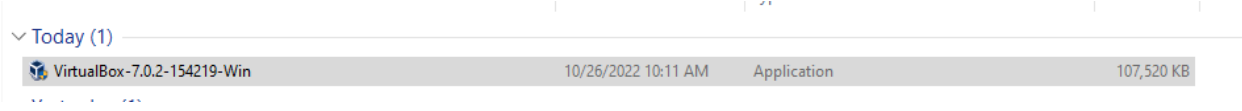
By downloading, you agree to the terms and conditions of the respective license.

If you're looking for the latest VirtualBox 6.1 packages, see [VirtualBox 6.1 builds](#). Versik

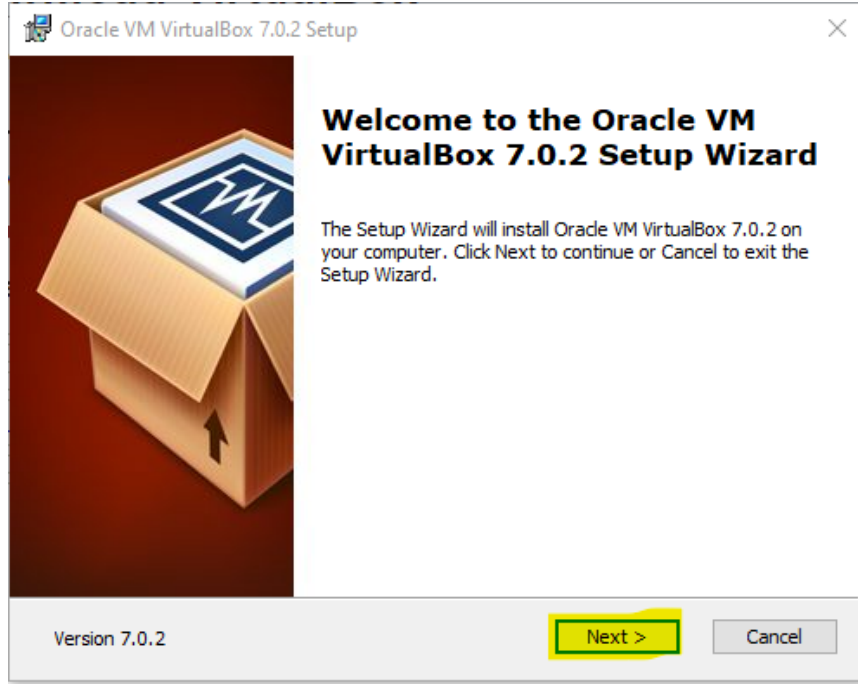
VirtualBox 7.0.2 platform packages

- Windows hosts
- macOS / Intel hosts
- Developer preview for macOS / Arm64 (M1/M2) hosts
- Linux distributions
- Solaris hosts
- Solaris 11 IPS hosts

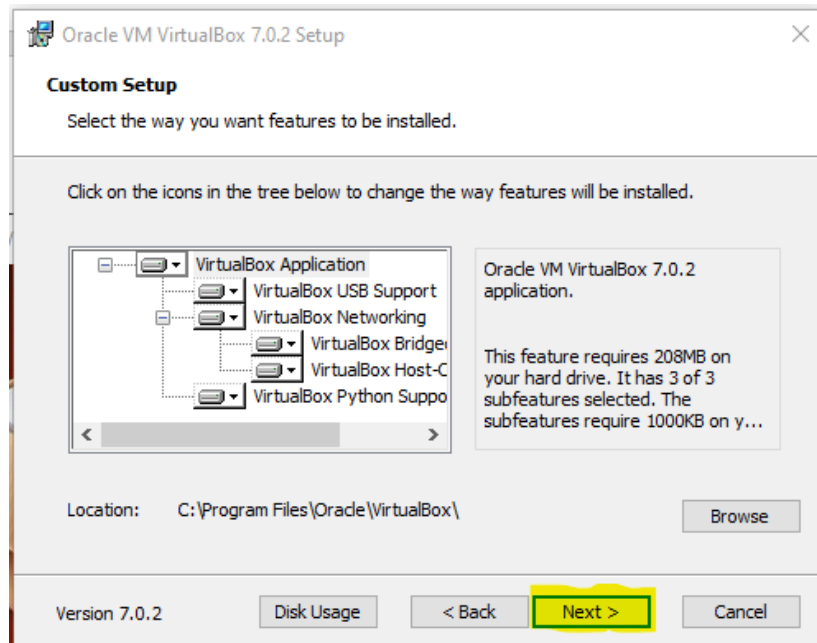
Çift klik yapılarak kurulum başlatılır.



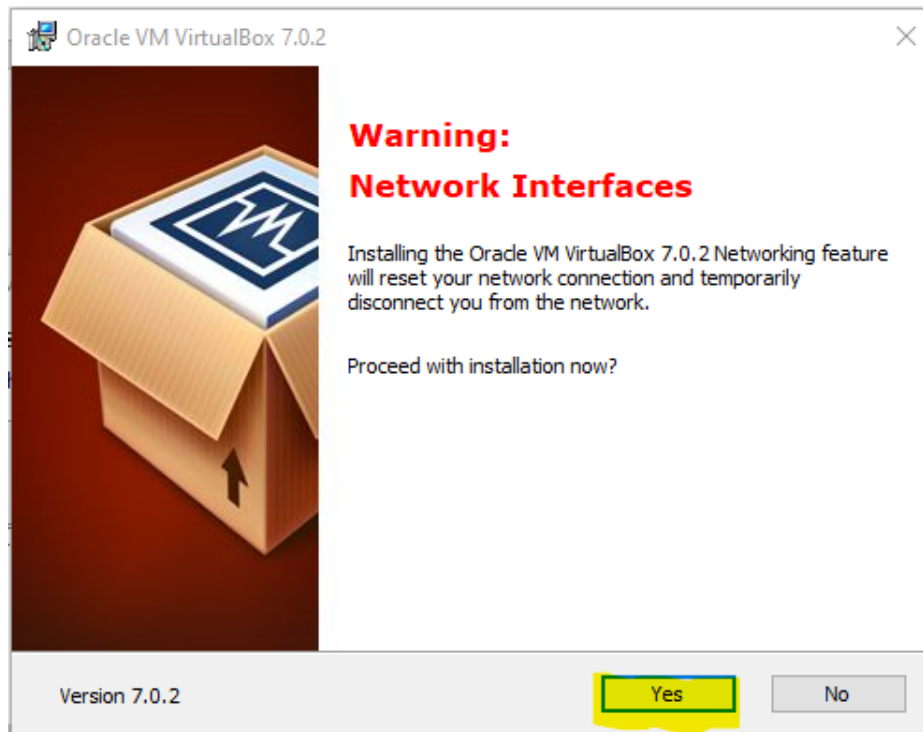
klik 'Next'



klik 'Next':



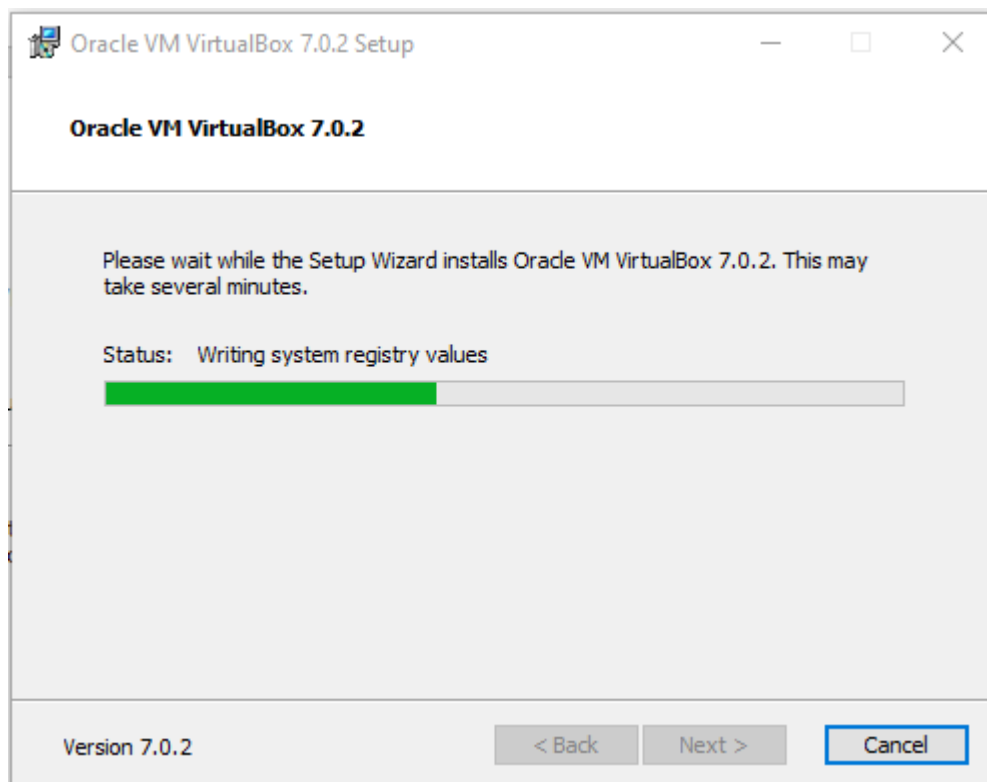
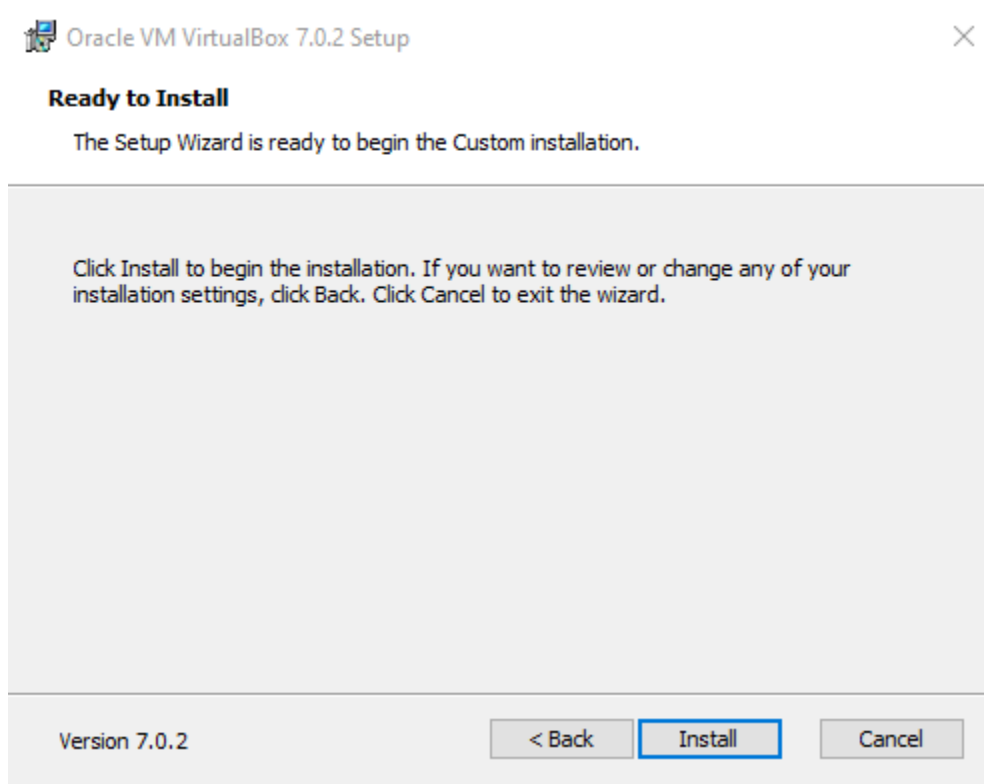
klik 'Yes':



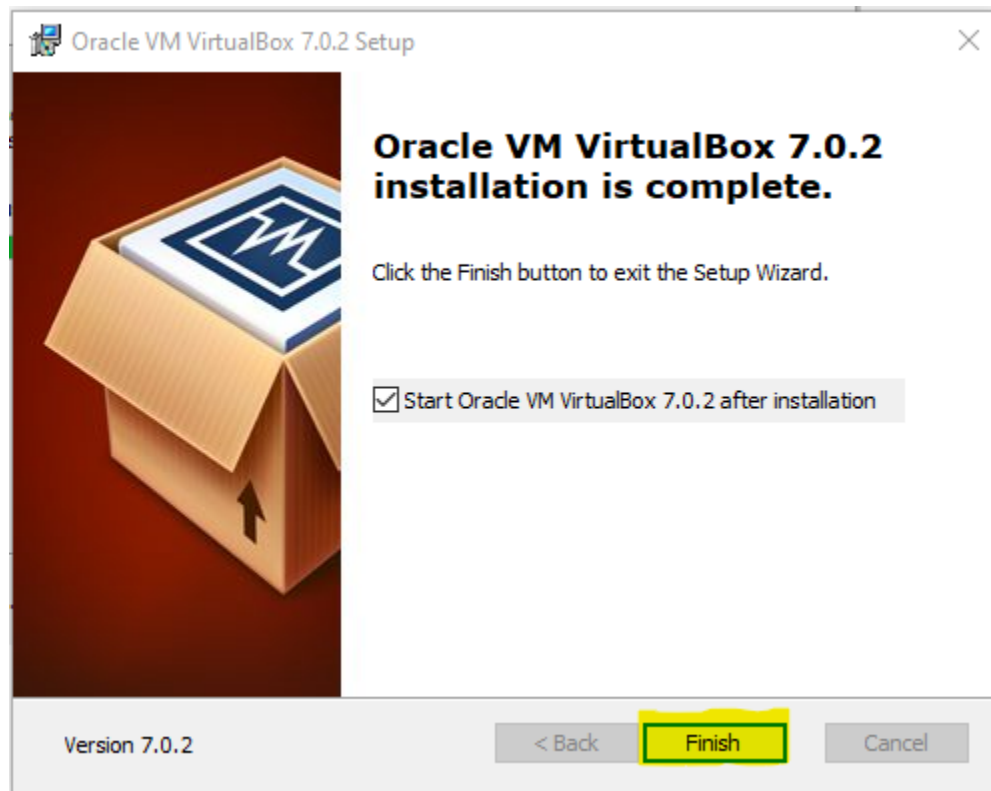
klik 'Yes'



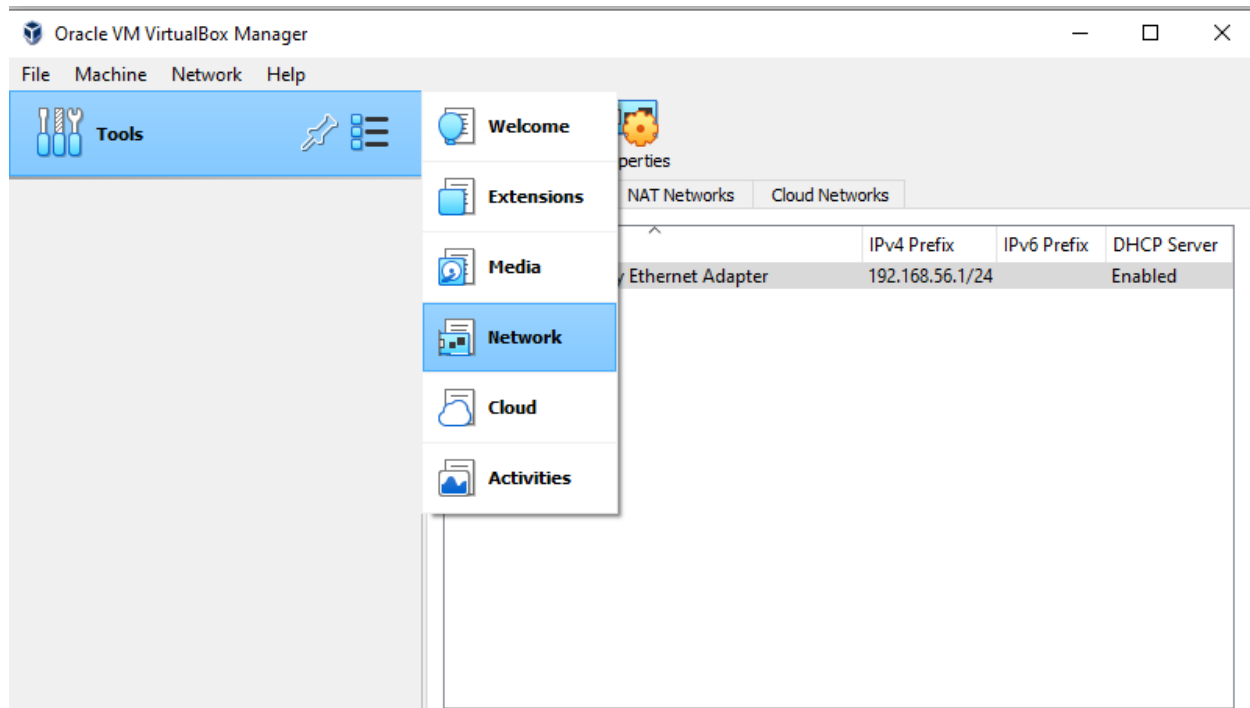
klik 'Install'



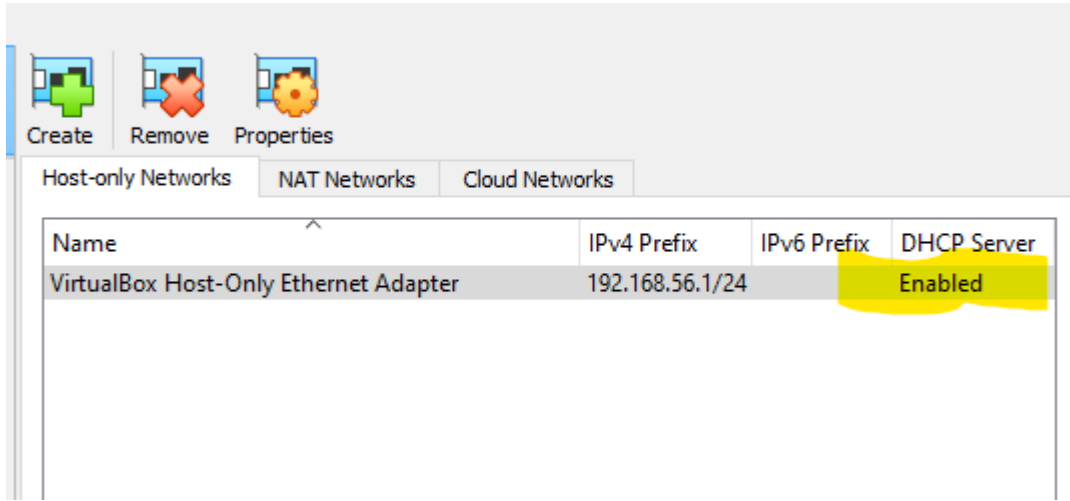
klik 'Finish'



VirtualBox window opens up automatically after the completion of installation. Select Tools and then Network:



'VirtualBox Host-only' aktif olmalı ve IP aralığı aynı olmalı (192.168.56.1/24)



2- Sanal makinenin import işlemi

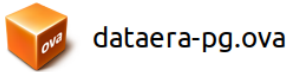
Daha önce dataera.com.tr/yayinlarimiz linkinden indirdi iseniz tekrar download etmeye gerek yok.

Link 1 : <https://dropbox.com/s/inrco5nu6czlabo/dataera-pg.ova?dl=0>

Link 2 : <https://dataera.com.tr/dataera-pg.ova>

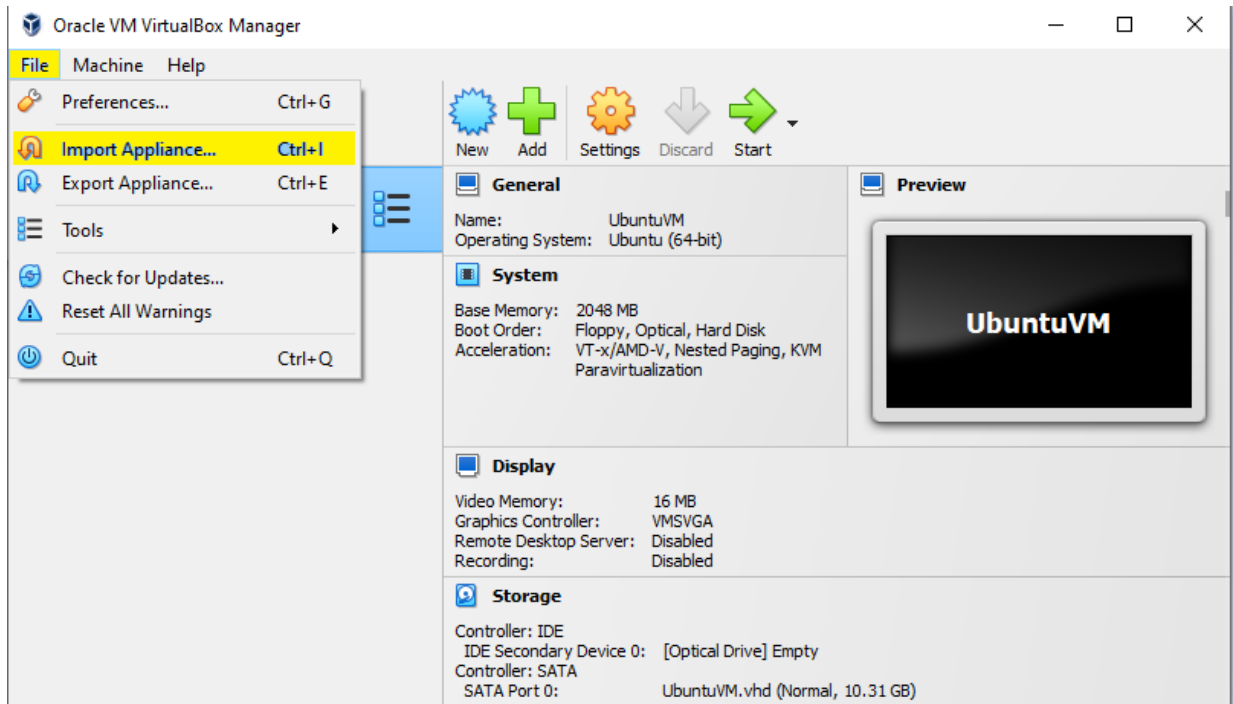
Güncel linkleri dataera.com.tr/yayinlarimiz sayfasından erişebilirsiniz.

Not : Imaj isimleri farklı olabilir. Ova uzantılı dosyayı indirim import işlemi yapılır.

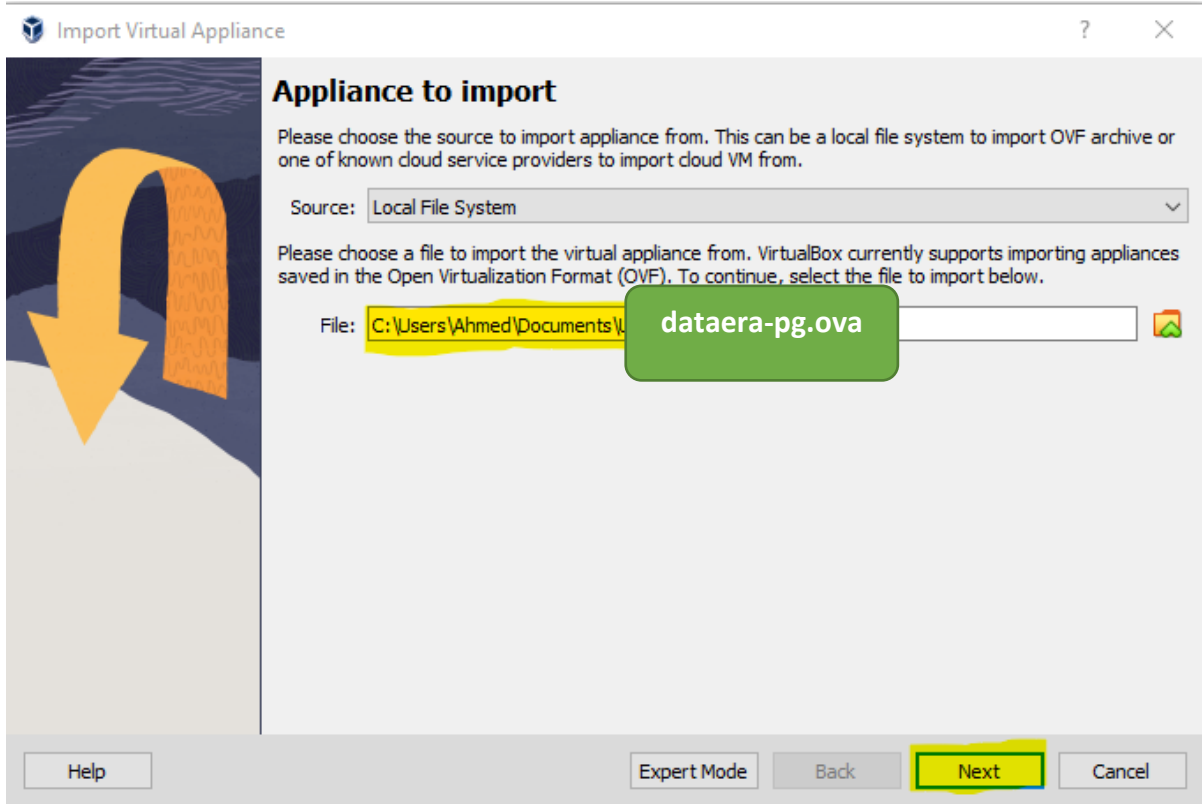


Import the downloaded VM image in the VirtualBox console:

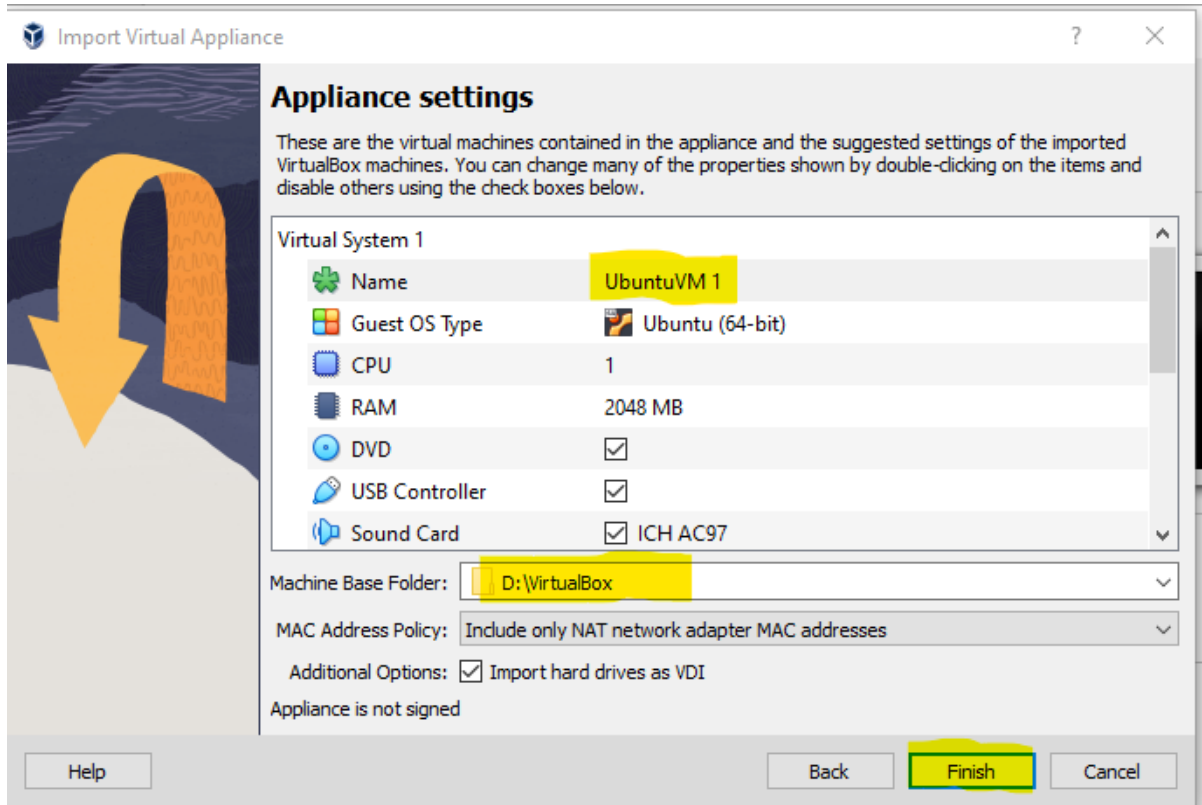
Select 'File' > 'Import Appliance'



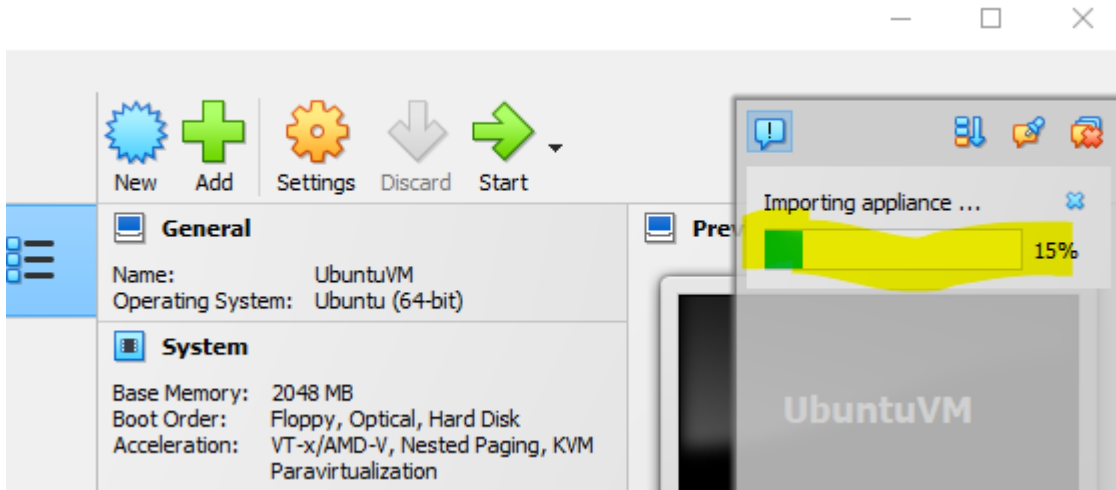
İndirdiğiniz *.ova uzantılı dosya seçilip 'Next' e tıklanır.



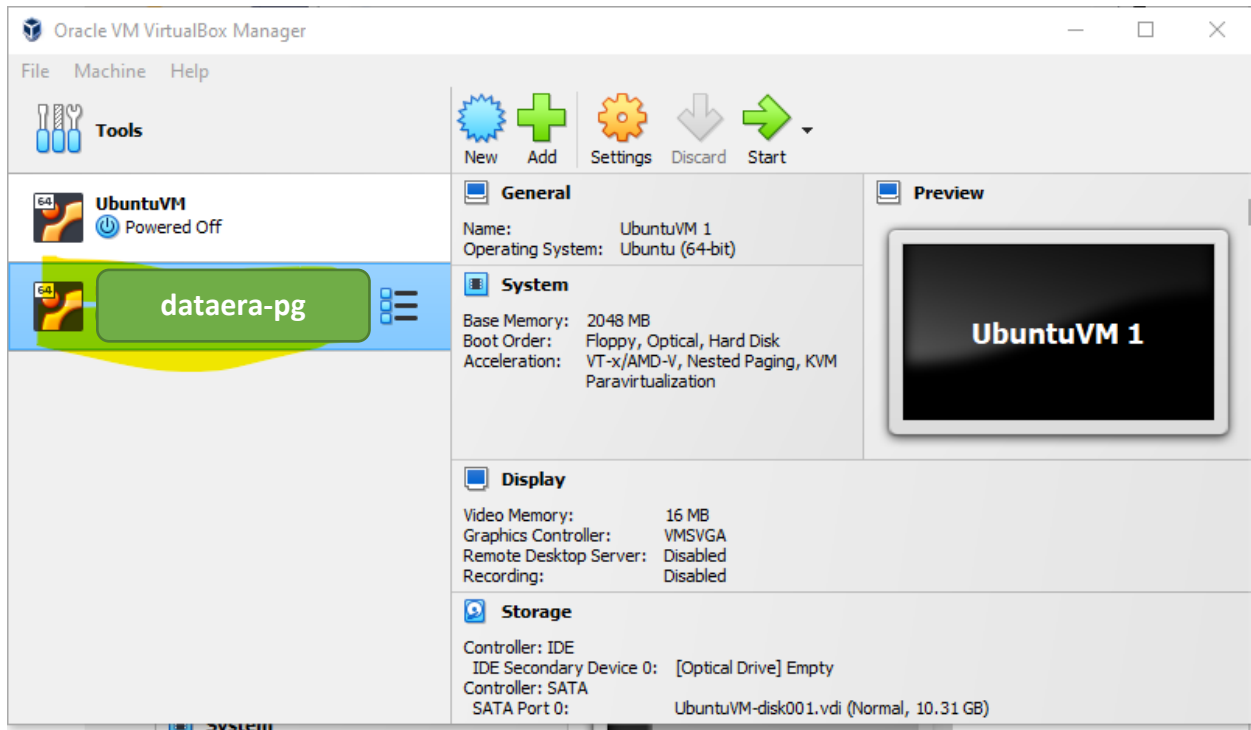
Gerek duyarsanız ayarlarda değişiklik yapabilirsiniz. Default ayarlarda bırakırsanız da sorunsuz çalışacaktır.



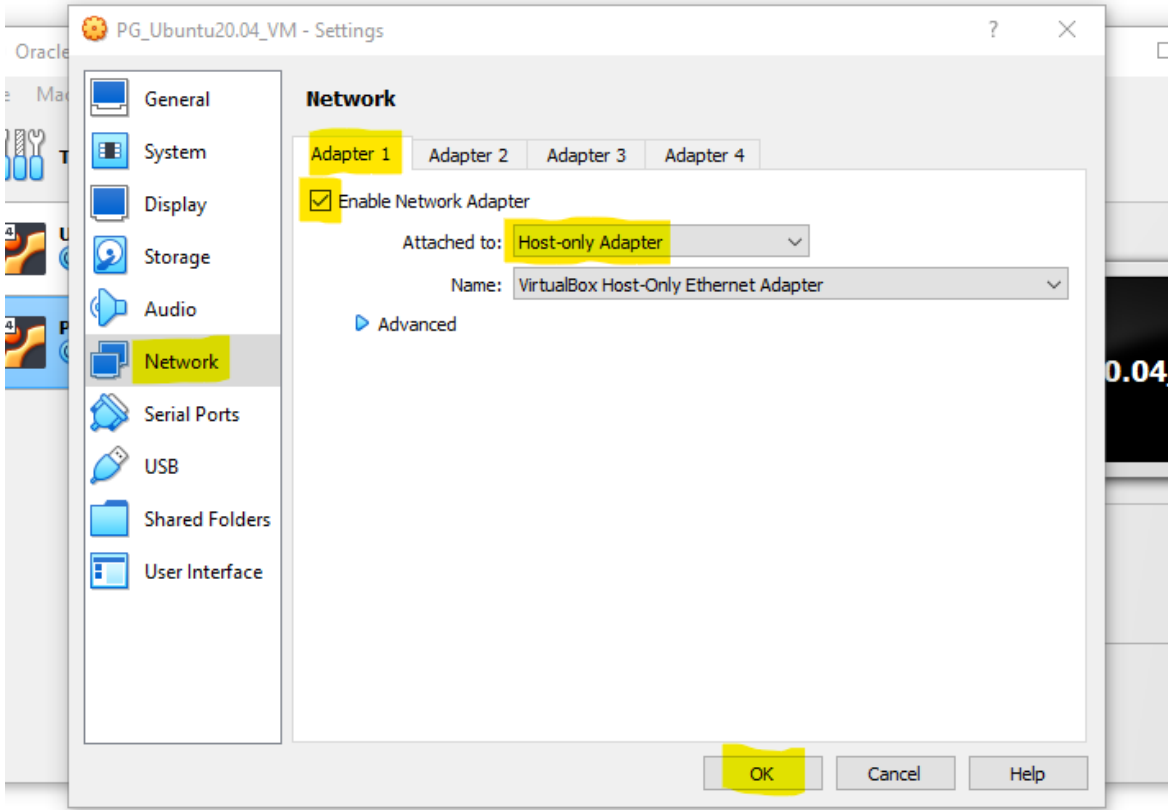
The import işlemi status sağdaki konsoldan izlenebilir.



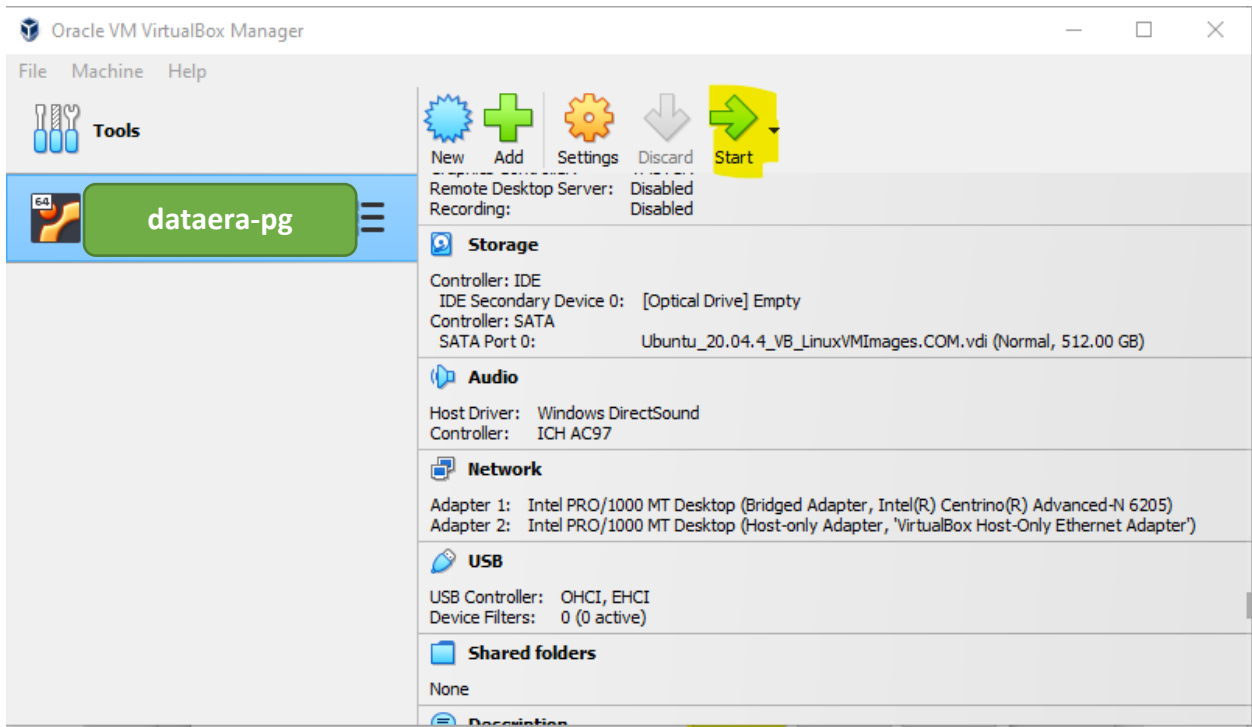
İmport tamamlandığında dataera-pg adında bir sanal makine sol konsolda görülür.



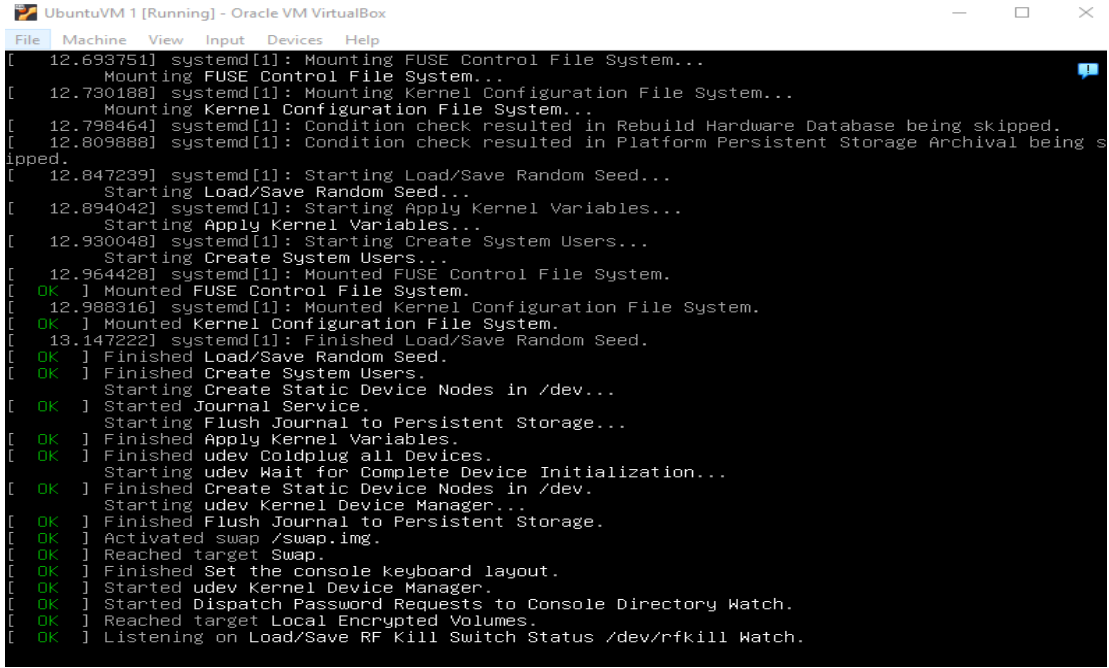
Settings penceresinde network tabında Adapter1 in ayarları aşağıdaki gibi olmalıdır.



Start ile başlatılır.



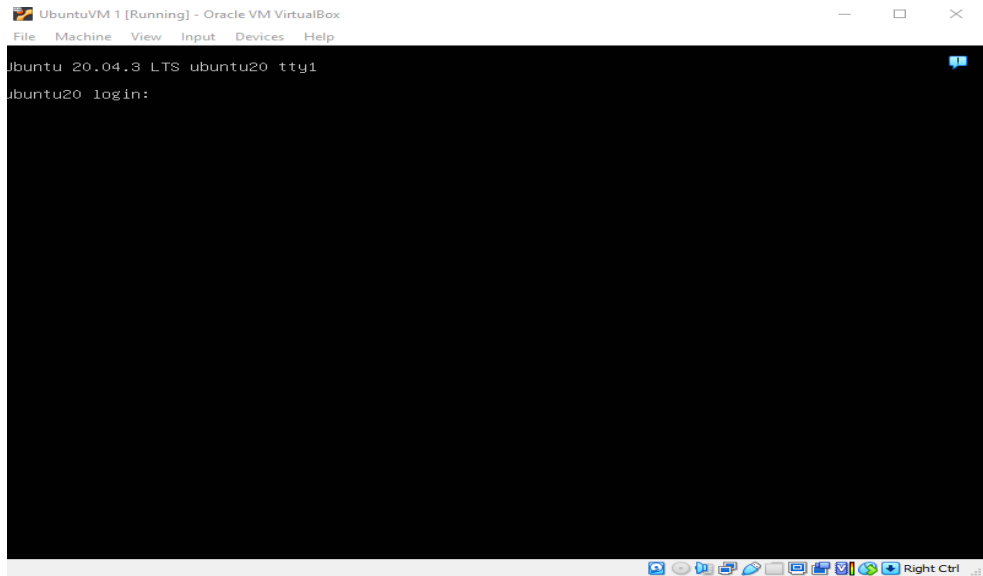
Ubuntu/Debian açılış ekranı.



```
[ 12.693751] systemd[1]: Mounting FUSE Control File System...
[ 12.730188] systemd[1]: Mounting FUSE Control File System...
[ 12.730188] systemd[1]: Mounting Kernel Configuration File System...
[ 12.798464] systemd[1]: Mounting Kernel Configuration File System...
[ 12.798464] systemd[1]: Condition check resulted in Rebuild Hardware Database being skipped.
[ 12.809888] systemd[1]: Condition check resulted in Platform Persistent Storage Archival being skipped.
[ 12.847239] systemd[1]: Starting Load/Save Random Seed...
[ 12.847239] systemd[1]: Starting Load/Save Random Seed...
[ 12.894042] systemd[1]: Starting Apply Kernel Variables...
[ 12.894042] systemd[1]: Starting Apply Kernel Variables...
[ 12.930048] systemd[1]: Starting Create System Users...
[ 12.930048] systemd[1]: Starting Create System Users...
[ 12.964428] systemd[1]: Mounted FUSE Control File System.
[ 12.964428] systemd[1]: Mounted FUSE Control File System.
[ 12.988316] systemd[1]: Mounted Kernel Configuration File System.
[ 12.988316] systemd[1]: Mounted Kernel Configuration File System.
[ 13.147222] systemd[1]: Finished Load/Save Random Seed.
[ 13.147222] systemd[1]: Finished Load/Save Random Seed.
[ 13.147222] systemd[1]: Finished Create System Users.
[ 13.147222] systemd[1]: Finished Create System Users.
[ 13.147222] systemd[1]: Starting Create Static Device Nodes in /dev...
[ 13.147222] systemd[1]: Starting Create Static Device Nodes in /dev...
[ 13.147222] systemd[1]: Started Journal Service.
[ 13.147222] systemd[1]: Started Journal Service.
[ 13.147222] systemd[1]: Starting Flush Journal to Persistent Storage...
[ 13.147222] systemd[1]: Starting Flush Journal to Persistent Storage...
[ 13.147222] systemd[1]: Finished Apply Kernel Variables.
[ 13.147222] systemd[1]: Finished Apply Kernel Variables.
[ 13.147222] systemd[1]: Finished udev Coldplug all Devices.
[ 13.147222] systemd[1]: Finished udev Coldplug all Devices.
[ 13.147222] systemd[1]: Starting udev Wait for Complete Device Initialization...
[ 13.147222] systemd[1]: Starting udev Wait for Complete Device Initialization...
[ 13.147222] systemd[1]: Finished Create Static Device Nodes in /dev.
[ 13.147222] systemd[1]: Finished Create Static Device Nodes in /dev.
[ 13.147222] systemd[1]: Starting udev Kernel Device Manager...
[ 13.147222] systemd[1]: Starting udev Kernel Device Manager...
[ 13.147222] systemd[1]: Finished Flush Journal to Persistent Storage.
[ 13.147222] systemd[1]: Finished Flush Journal to Persistent Storage.
[ 13.147222] systemd[1]: Activated swap /swap.img.
[ 13.147222] systemd[1]: Activated swap /swap.img.
[ 13.147222] systemd[1]: Reached target Swap.
[ 13.147222] systemd[1]: Reached target Swap.
[ 13.147222] systemd[1]: Finished Set the console keyboard layout.
[ 13.147222] systemd[1]: Finished Set the console keyboard layout.
[ 13.147222] systemd[1]: Started udev Kernel Device Manager.
[ 13.147222] systemd[1]: Started udev Kernel Device Manager.
[ 13.147222] systemd[1]: Started Dispatch Password Requests to Console Directory Watch.
[ 13.147222] systemd[1]: Started Dispatch Password Requests to Console Directory Watch.
[ 13.147222] systemd[1]: Reached target Local Encrypted Volumes.
[ 13.147222] systemd[1]: Reached target Local Encrypted Volumes.
[ 13.147222] systemd[1]: Listening on Load/Save RF Kill Switch Status /dev/rfkill Watch.
[ 13.147222] systemd[1]: Listening on Load/Save RF Kill Switch Status /dev/rfkill Watch.
```

Kullanıcı adı ve şifre girilerek login olunabilir. (Şifre yazılırken ekranda görünmez.)

Kullanıcı	şifre
root	dataera
postgres	dataera
dataera	dataera

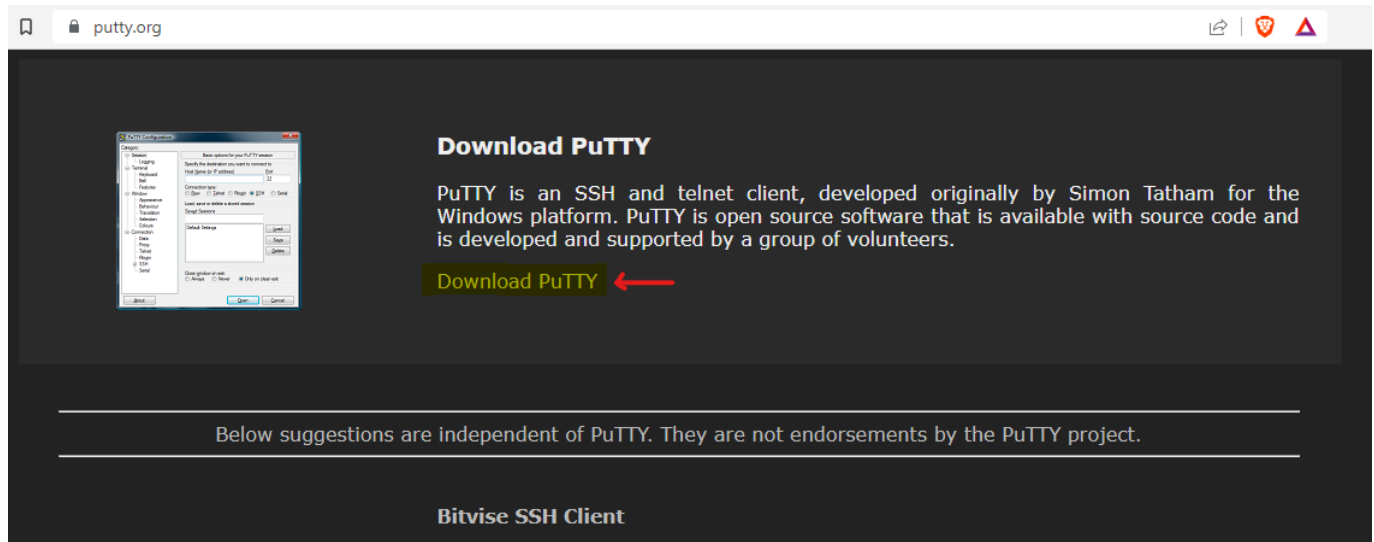


```
ubuntu 20.04.3 LTS ubuntu20 tty1
ubuntu20 login:
```

3- Putty (SSH client/istemci) kurulumu

<https://www.putty.org/> linkinden putty.msi indirilir.

klik 'Download PuTTY'



chiark.greenend.org.uk/~sgtatham/putty/latest.html

Download PuTTY: latest release (0.78)

[Home](#) | [FAQ](#) | [Feedback](#) | [Licence](#) | [Updates](#) | [Mirrors](#) | [Keys](#) | [Links](#) | [Team](#)
Download: [Stable](#) · [Snapshot](#) | [Docs](#) | [Changes](#) | [Wishlist](#)

This page contains download links for the latest released version of PuTTY. Currently this is 0.78, released on 2022-10-29.

When new releases come out, this page will update to contain the latest, so this is a good page to bookmark or link to. Alternatively, here is a [permanent link to the 0.78 release](#).

Release versions of PuTTY are versions we think are reasonably likely to work well. However, they are often not the most up-to-date version of the code available. If you have a problem with [development snapshots](#), to see if the problem has already been fixed in those versions.

Package files

You probably want one of these. They include versions of all the PuTTY utilities (except the new and slightly experimental Windows pterm).

(Not sure whether you want the 32-bit or the 64-bit version? Read the [FAQ entry](#).)

We also publish the latest PuTTY installers for all Windows architectures as a free-of-charge download at the [Microsoft Store](#); they usually take a few days to appear there after we release.

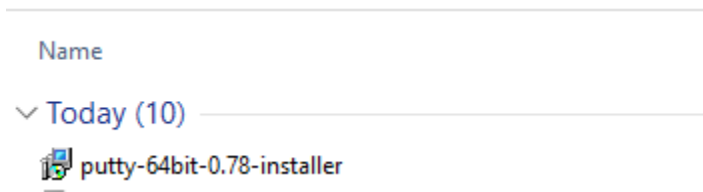
MSI ('Windows Installer')

64-bit x86: [putty-64bit-0.78-installer.msi](#) ([signature](#))
64-bit Arm: [putty-arm64-0.78-installer.msi](#) ([signature](#))
32-bit x86: [putty-0.78-installer.msi](#) ([signature](#))

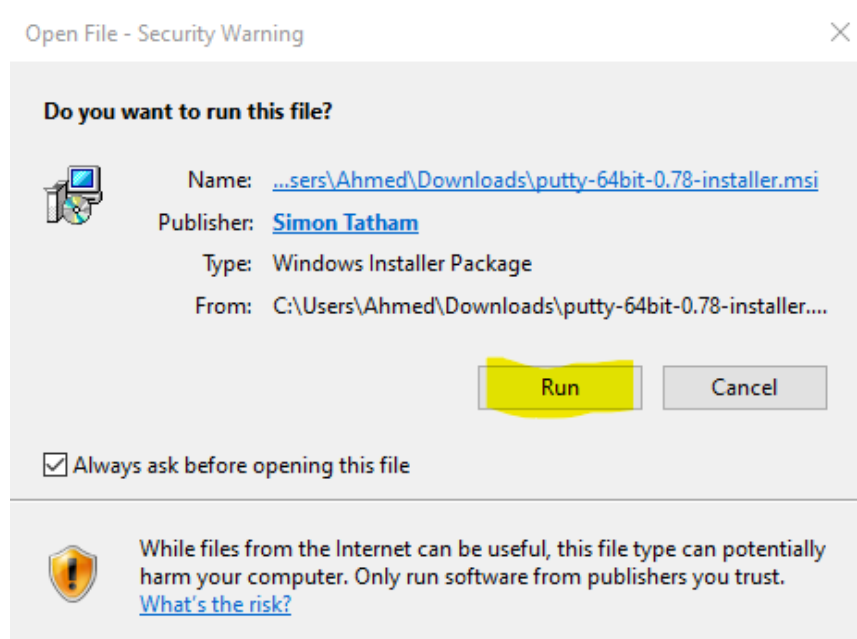
Unix source archive

.tar.gz: [putty-0.78.tar.gz](#) ([signature](#))

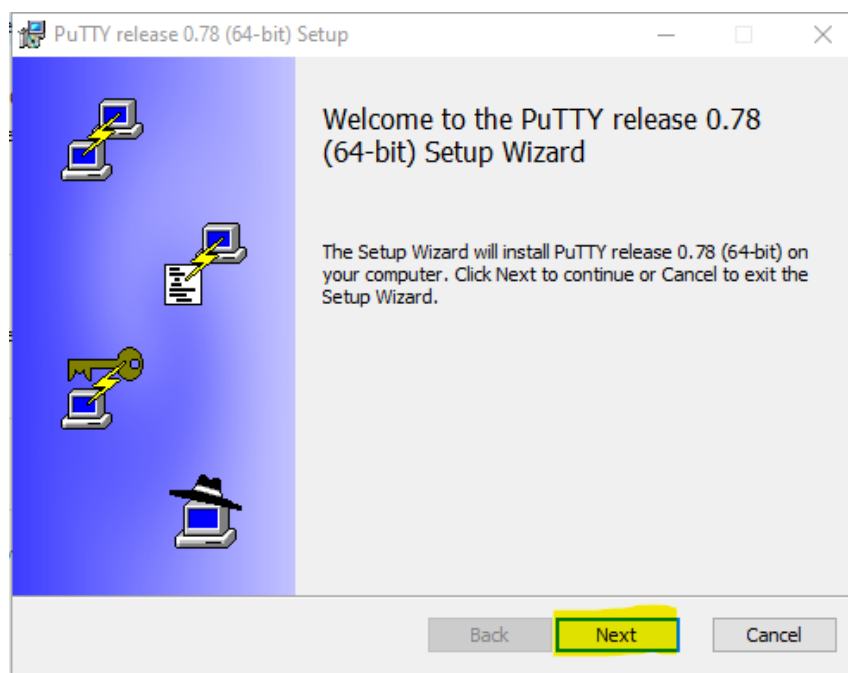
Double klik putty-64bit-078-installer



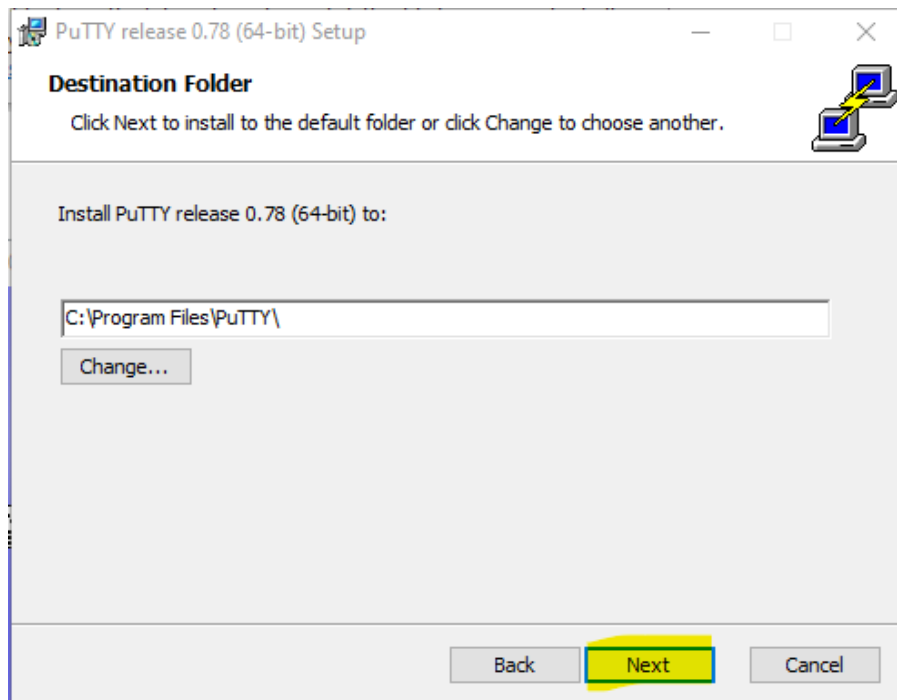
klik 'Run'



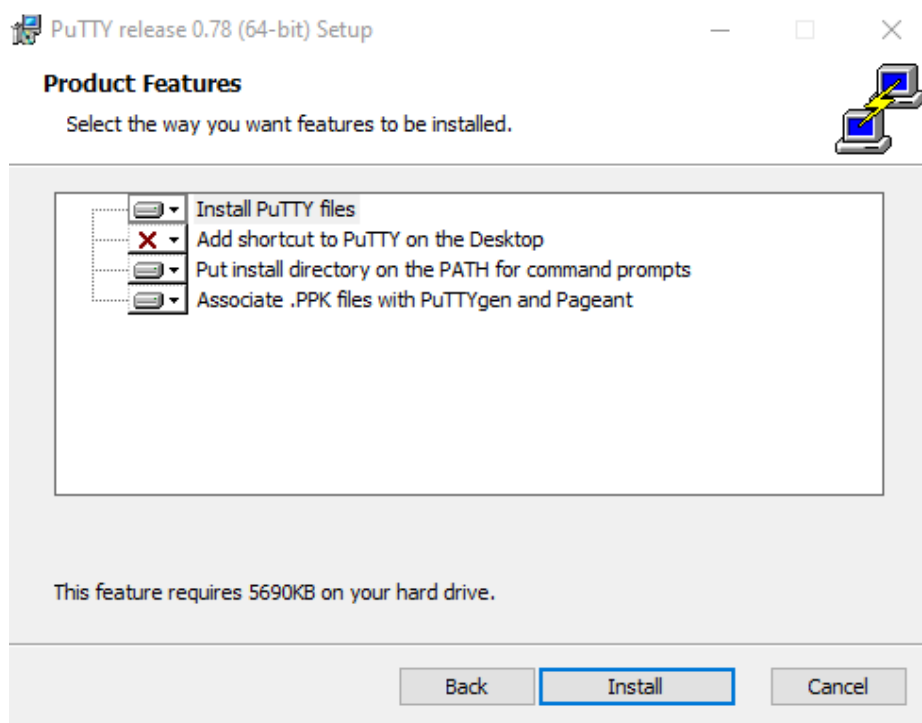
klik 'Next'



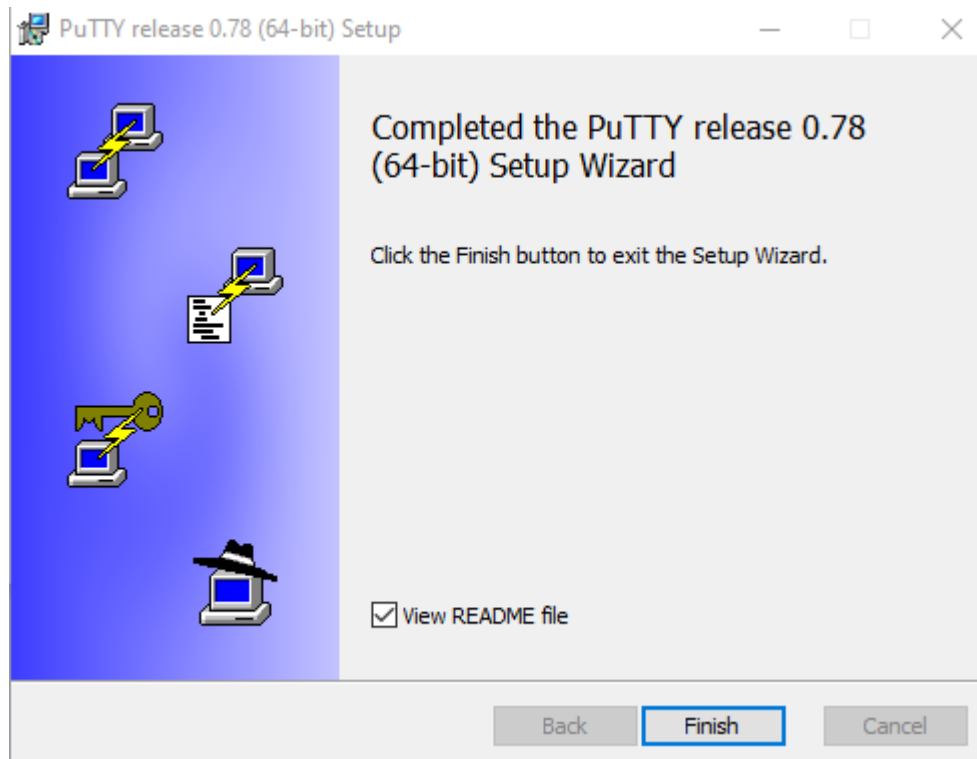
klik 'Next'



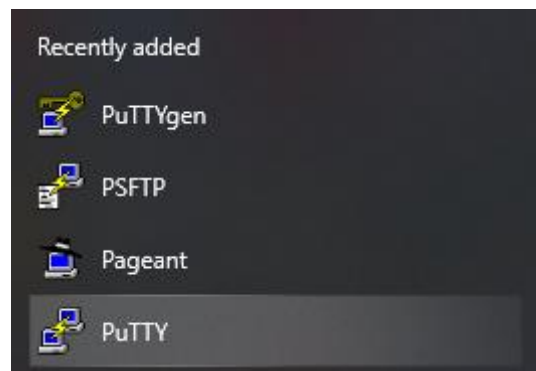
klik 'Install'



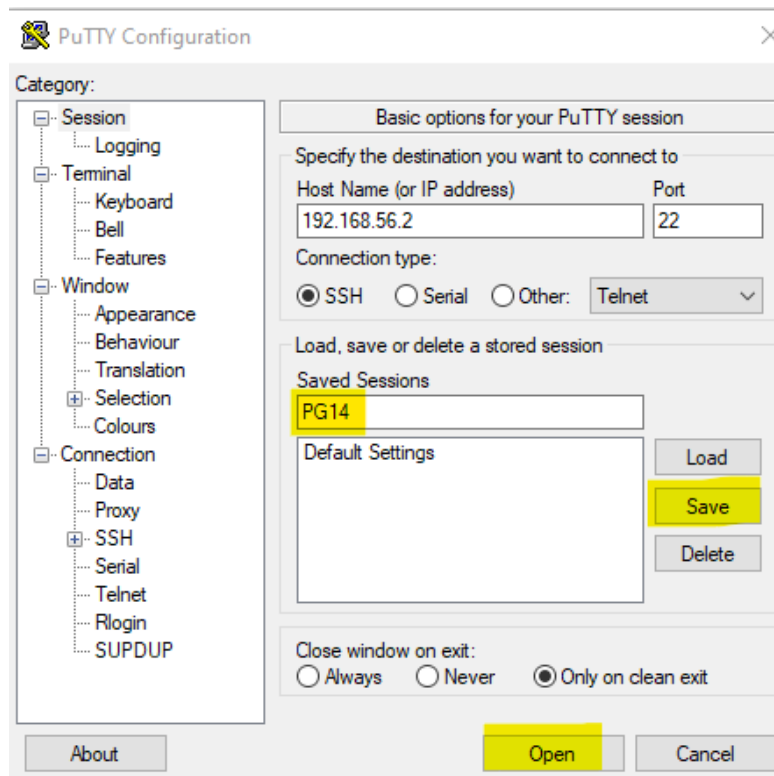
klik 'Finish'



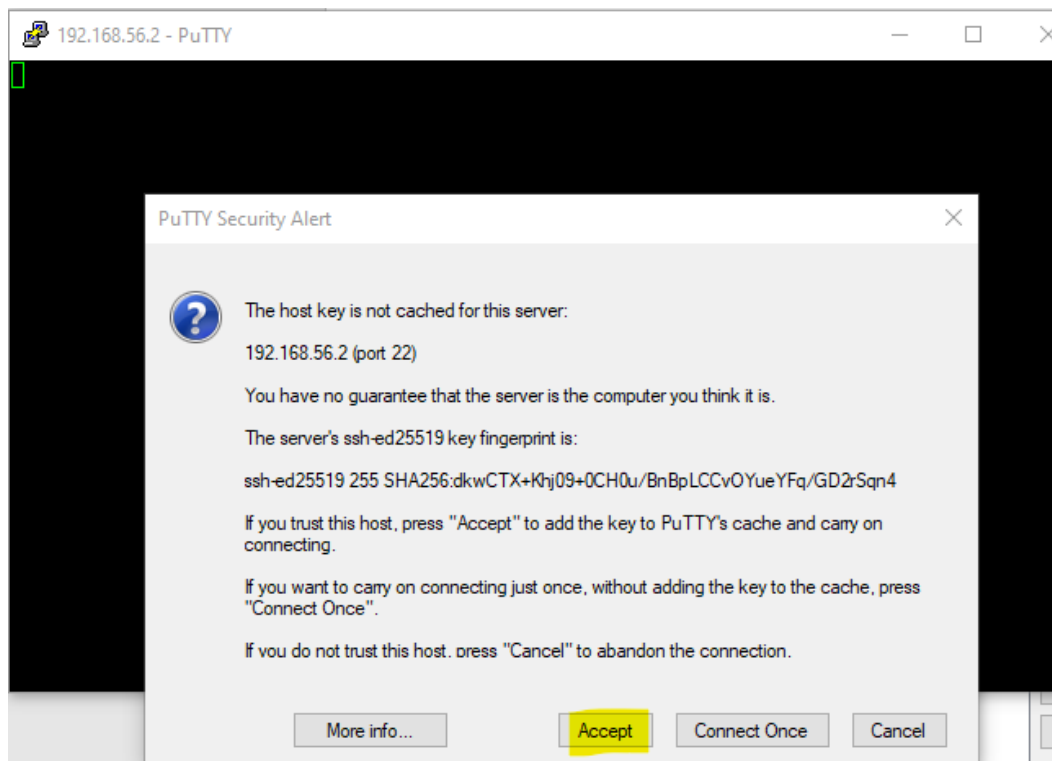
From the Windows Start icon, select 'PuTTY'



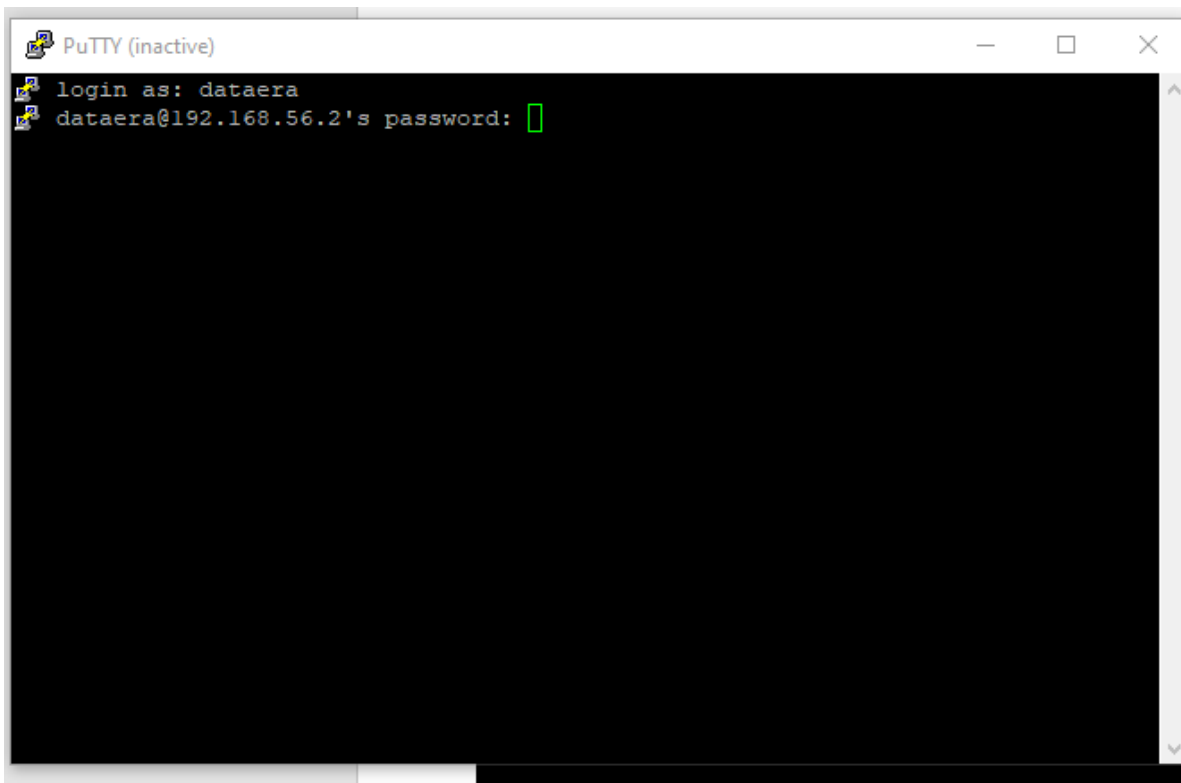
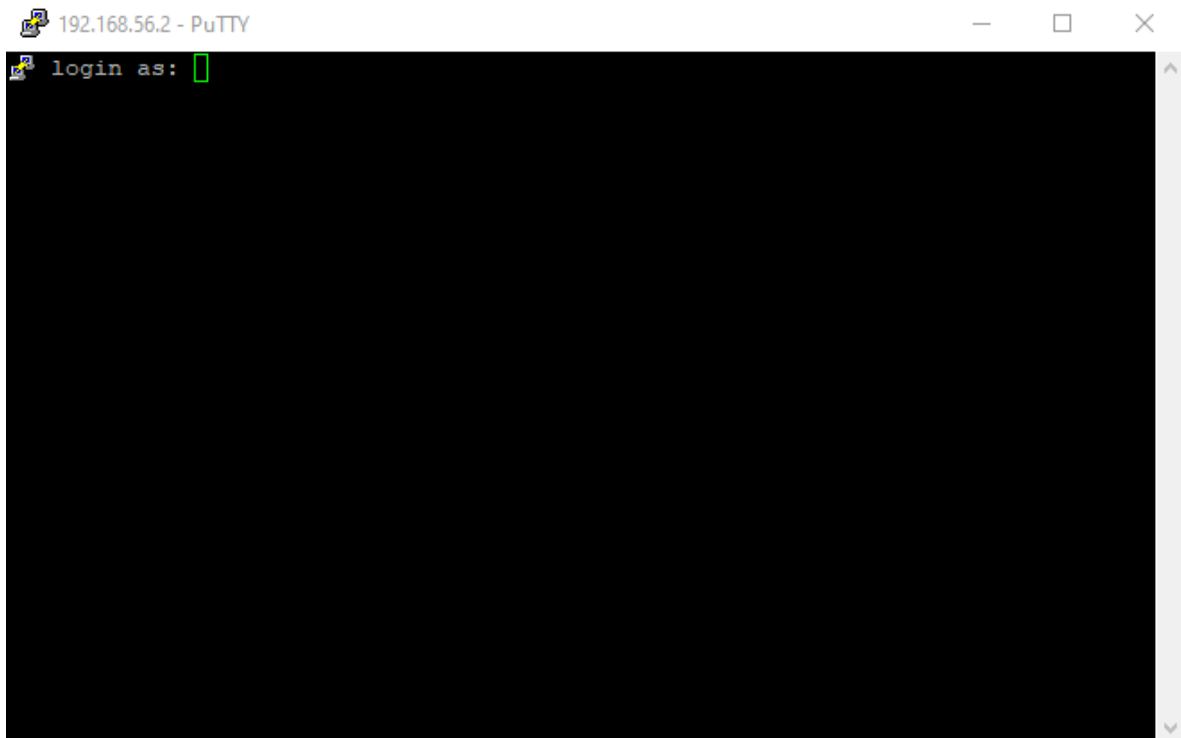
Sanal sunucunuzun IP'si girilerek erişim sağlanır. "saved session" a istediğiniz bir ismi verebilirsiniz.



klik 'Accept'



Enter the provided username and password in the login prompt.




```
dataera@dataera-pg: ~  
login as: dataera  
dataera@192.168.56.2's password:  
Welcome to Ubuntu 20.04.5 LTS (GNU/Linux 5.4.0-132-generic x86_64)  
  
* Documentation:  https://help.ubuntu.com  
* Management:    https://landscape.canonical.com  
* Support:       https://ubuntu.com/advantage  
  
System information as of Wed 23 Nov 2022 08:43:34 PM +03  
  
System load:  0.08          Processes:            130  
Usage of /:   10.2% of 47.93GB  Users logged in:    1  
Memory usage: 24%          IPv4 address for enp0s3: 192.168.56.2  
Swap usage:   0%  
  
0 updates can be applied immediately.  
  
Failed to connect to https://changelogs.ubuntu.com/meta-release-lts. Check your  
Internet connection or proxy settings  
  
Last login: Wed Nov 23 18:55:20 2022  
dataera@dataera-pg:~$
```

4- Pgadmin (postgresql client/istemci) kurulumu, postgresql'e bağlantı ve sorgulama

<https://www.postgresql.org/ftp/pgadmin/pgadmin4/v6.15/windows/>

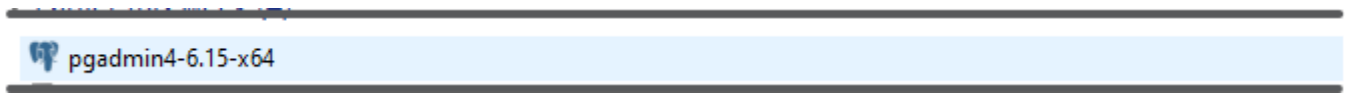
linkinden windows için pgadmin indirilir. (Linux kullanıyorsanız, Ubuntu vb. Desktop versiyonu indirilebilir.)



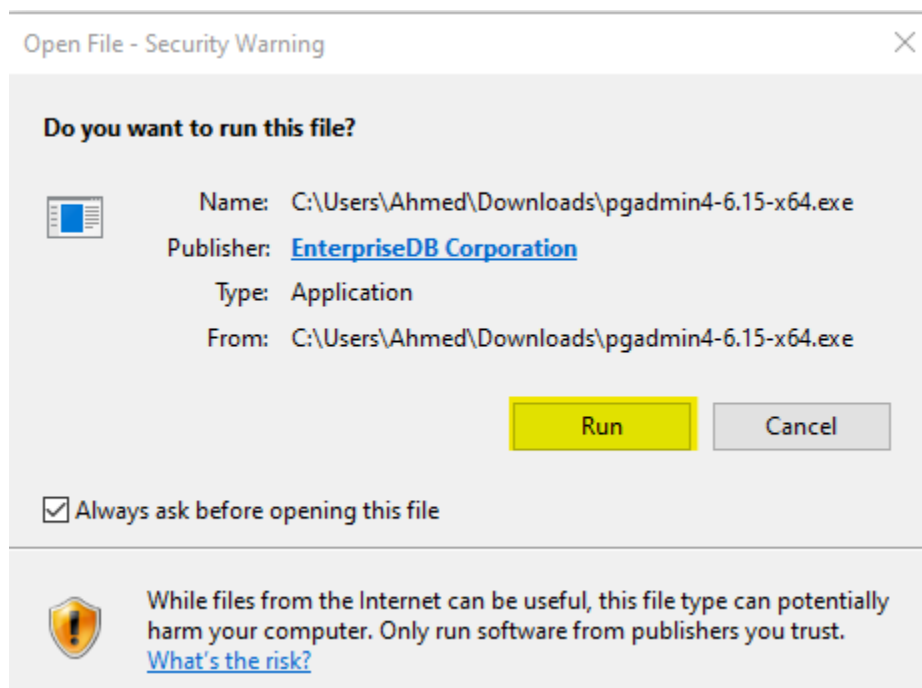
The screenshot shows the PostgreSQL website's file browser interface. The browser address bar displays the URL: <https://www.postgresql.org/ftp/pgadmin/pgadmin4/v6.15/windows/>. The page header includes navigation links: Home, About, Download, Documentation, Community, Developers, Support, Donate, and Your account. A search bar is located in the top right corner. Below the header, there is a navigation breadcrumb: Top → pgadmin → pgadmin4 → v6.15 → windows. The main content area is divided into sections: Quick Links (Downloads, Packages, Source, Software Catalogue, File Browser), File Browser (Parent Directory), and Files. The Files section contains two entries:

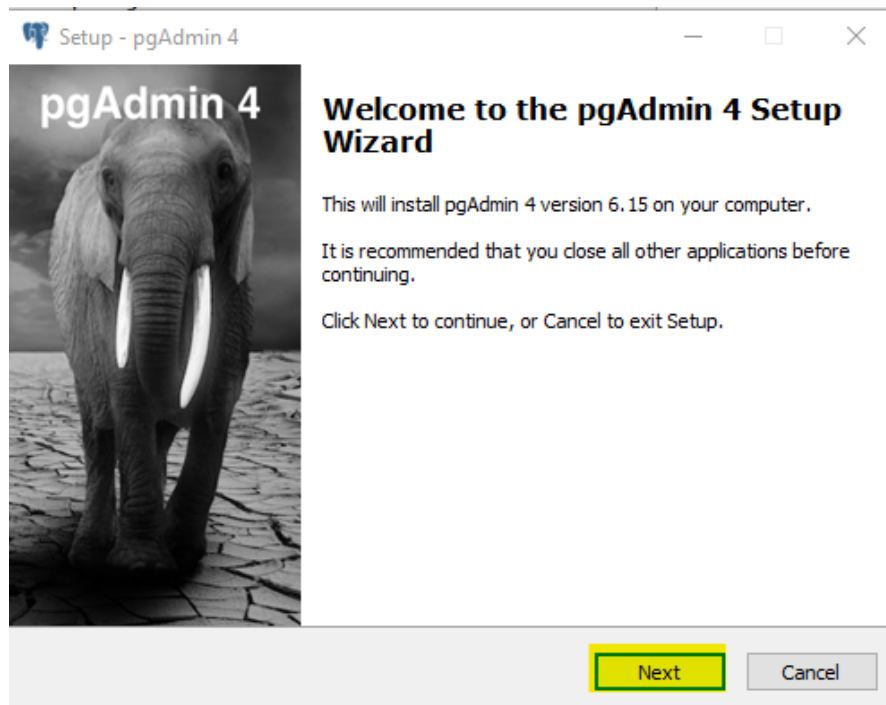
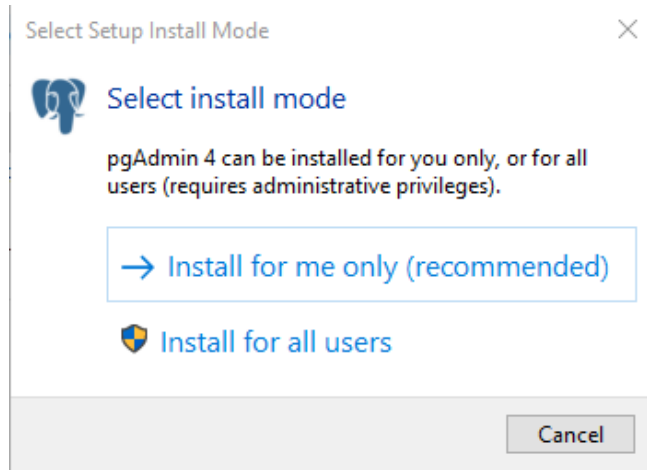
File Name	Modified	Size
CURRENT_MAINTAINER	2022-10-20 10:38:26	136 bytes
pgadmin4-6.15-x64.exe	2022-10-20 10:38:53	168.4 MB

Double-click the downloaded file.



klik 'Run'





Setup - pgAdmin 4

License Agreement

Please read the following important information before continuing.

Please read the following License Agreement. You must accept the terms of this agreement before continuing with the installation.

pgAdmin 4

Copyright (C) 2013 - 2022, The pgAdmin Development Team
Permission to use, copy, modify, and distribute this software and its documentation for any purpose, without fee, and without a written agreement is hereby granted, provided that the above copyright notice and this paragraph and the following two paragraphs appear in all copies.

I accept the agreement
 I do not accept the agreement

Back Next Cancel

Setup - pgAdmin 4

Select Destination Location

Where should pgAdmin 4 be installed?

Setup will install pgAdmin 4 into the following folder.

To continue, click Next. If you would like to select a different folder, click Browse.

C:\Users\Ahmed\AppData\Local\Programs\pgAdmin 4\v6 Browse...

At least 616.0 MB of free disk space is required.

Back Next Cancel

Select Start Menu Folder

Where should Setup place the program's shortcuts?



□ —
□ — Setup will create the program's shortcuts in the following Start Menu folder.
□ —

To continue, click Next. If you would like to select a different folder, click Browse.

pgAdmin 4

Browse...

Don't create a Start Menu folder

Back

Next

Cancel

Ready to Install

Setup is now ready to begin installing pgAdmin 4 on your computer.



Click Install to continue with the installation, or click Back if you want to review or change any settings.

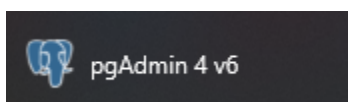
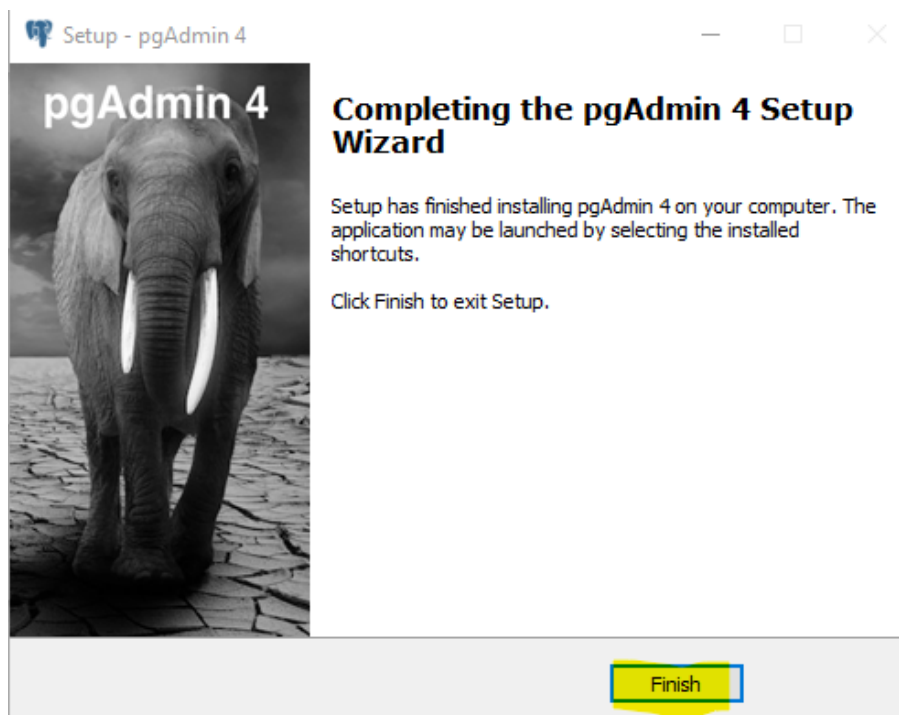
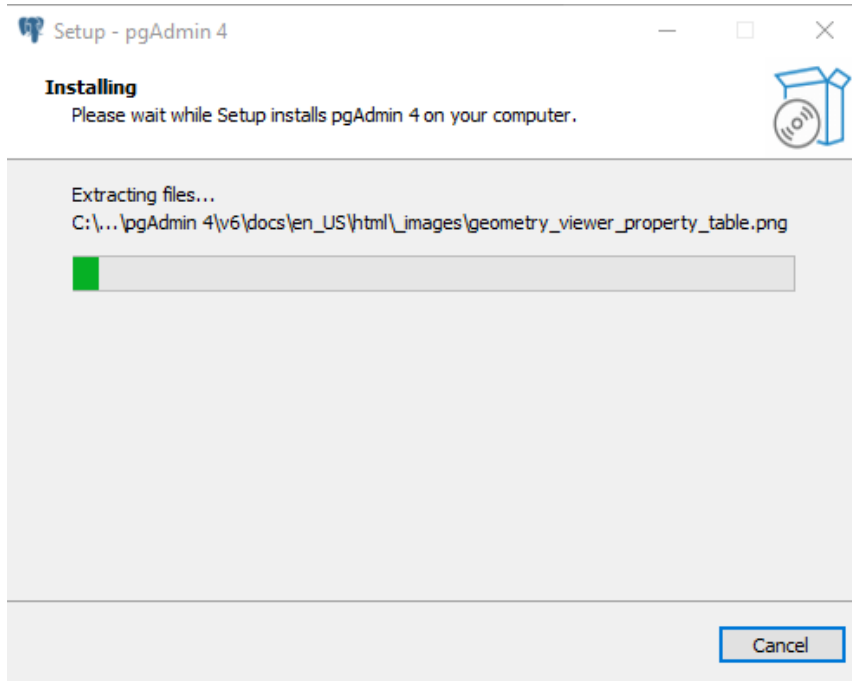
Destination location:
C:\Users\Ahmed\AppData\Local\Programs\pgAdmin 4\v6

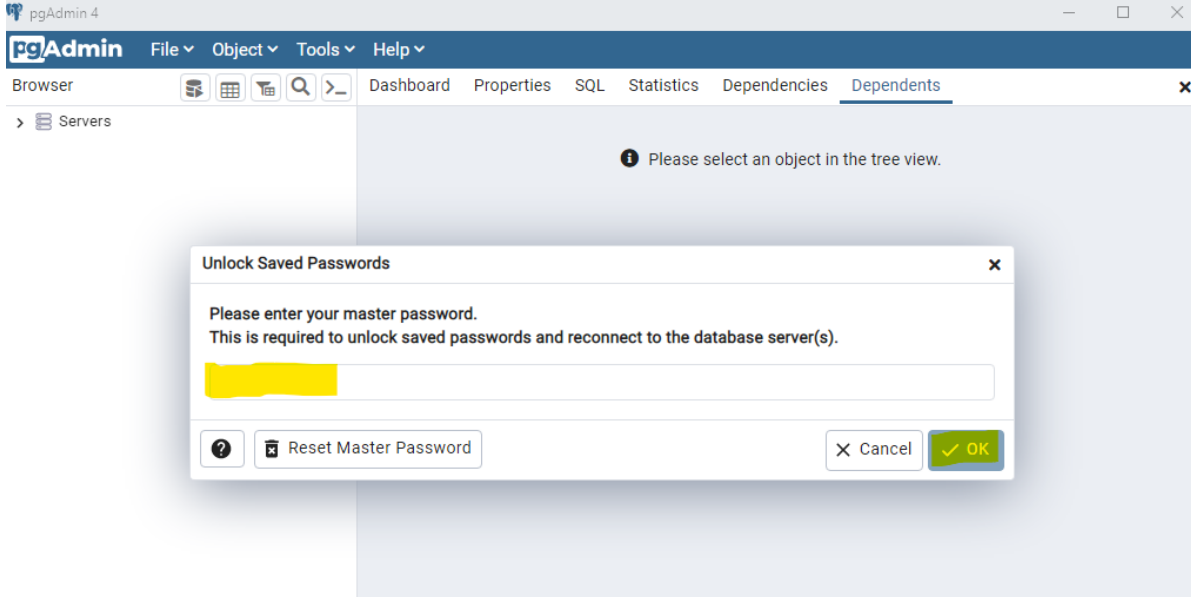
Start Menu folder:
pgAdmin 4

Back

Install

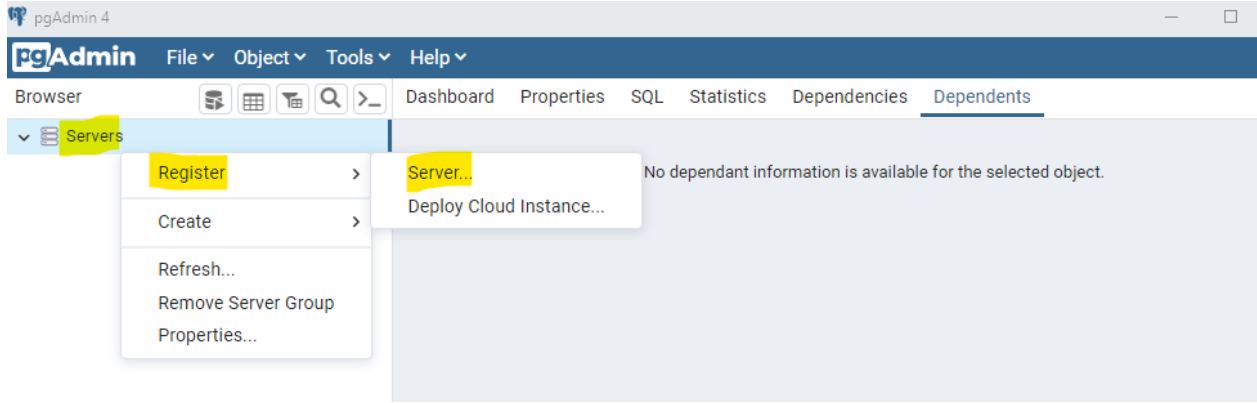
Cancel



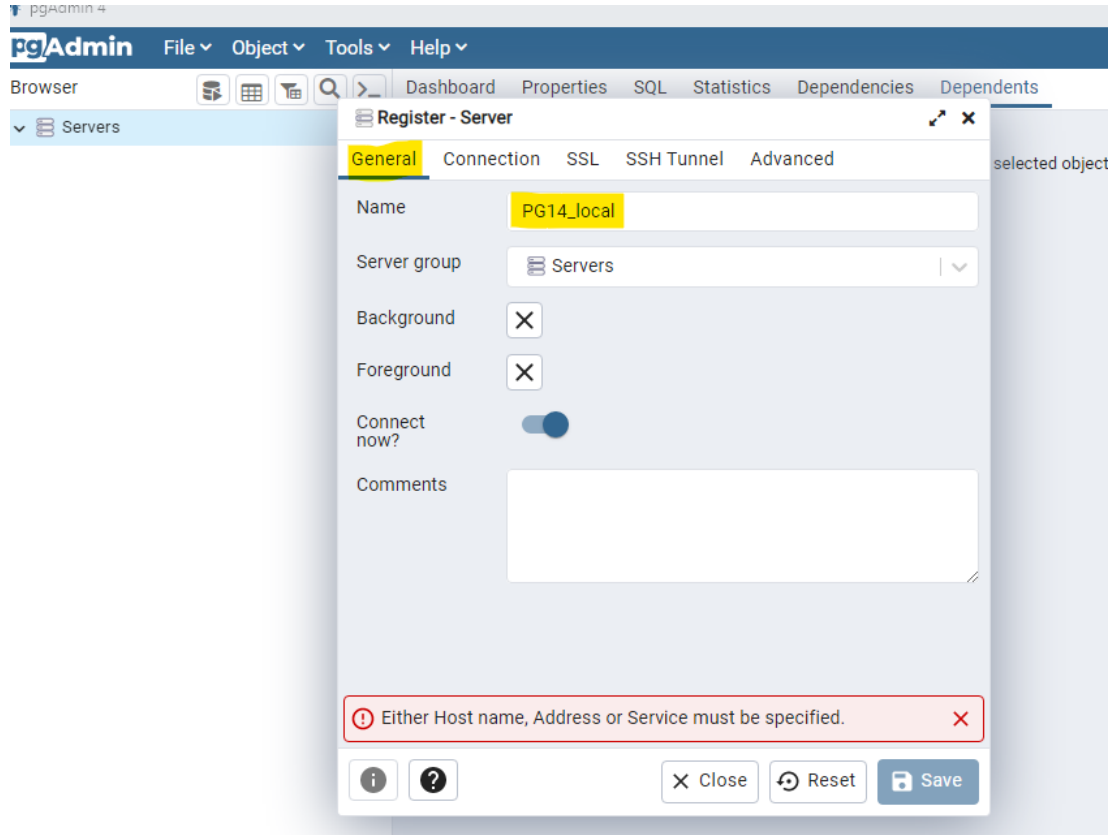


Note: pgadmin şifresi, eğer girilmezse veritabanlarına bağlantıyı da engelleyebiliyor.

Aşağıdaki adımlarla server sekmesinden veritabanı eklenir.



Name tabına istediğiniz bir isim verebilirsiniz.



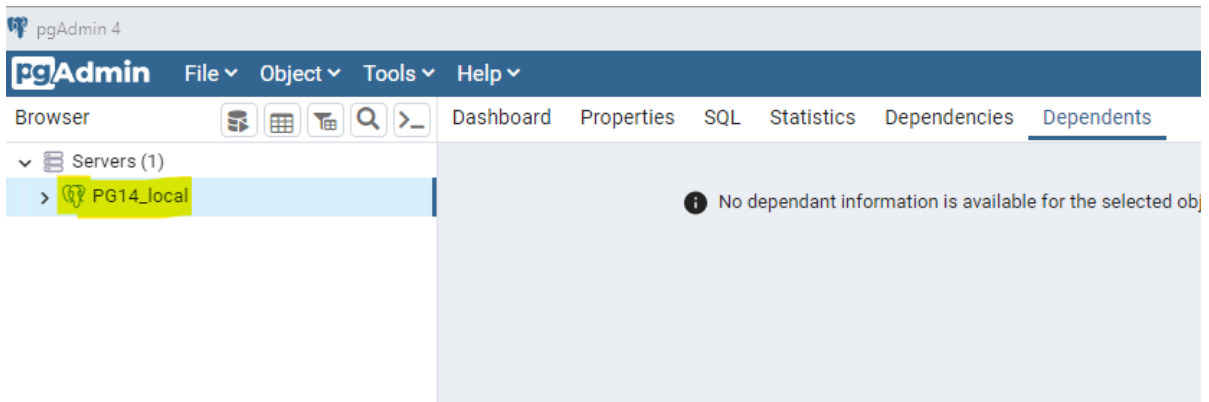
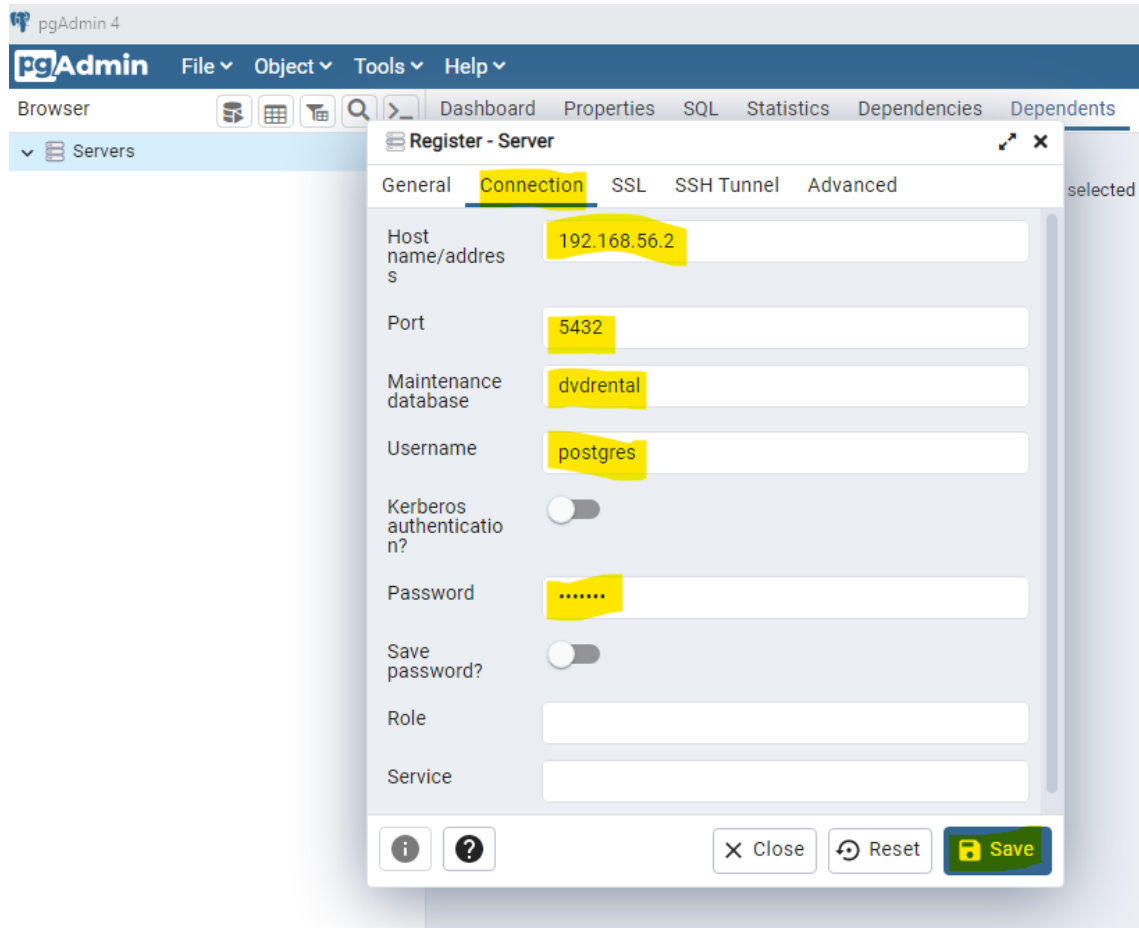
Save ile kayıt edilir.

Host name : 192.168.56.2 (this will be the IP address of database server)
Port : 5432 (postgres port number)

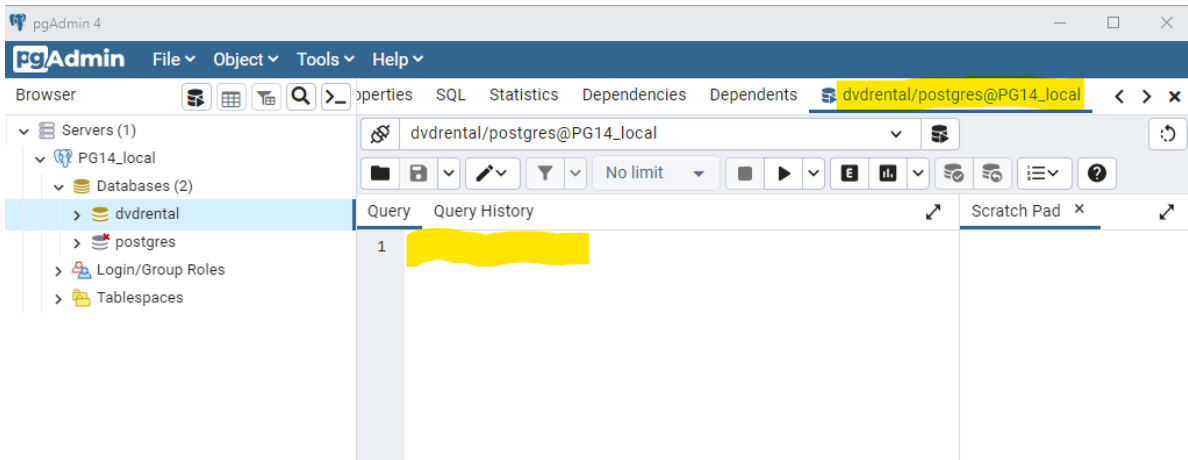
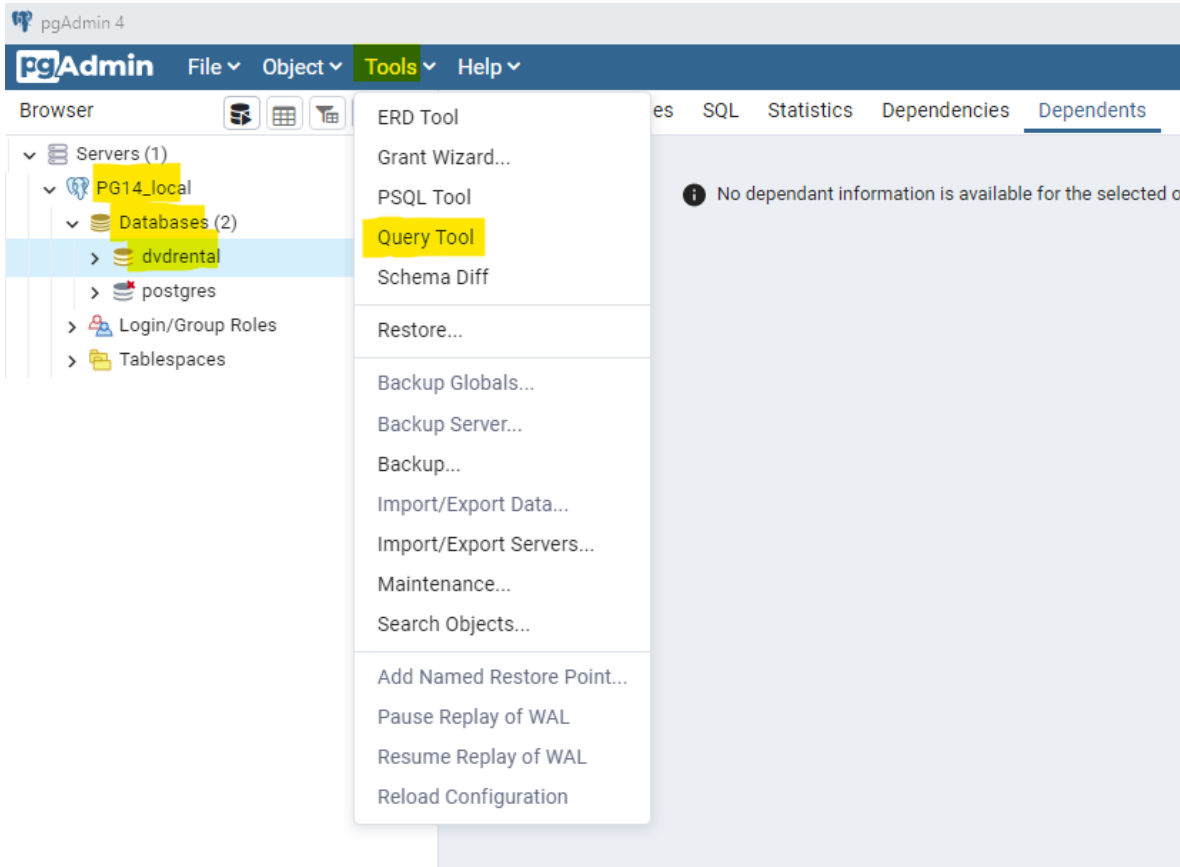
Maintenance database: dvdrental (postgres database name)

Username : postgres
Password : dataera

Not : Kaynak koddan kurulmuş postresi de eklemek için port kısmı 5434 yazılması gerekir. Önce açılması gerekir tabi. /var/lib/postgresql/okubeni.txt inin içinde açılış parametrelerini bulabilirsiniz.



Veritabanını seçtikten sonra "query tool" sekmesinden sql konsola erişilip sorgu çalıştırılabilir.



Enter the query and select the 'Execute' command in the above tab.

The screenshot shows the pgAdmin 4 interface. The left sidebar shows the server hierarchy: Servers (1) > PG14_local > Databases (2) > dvdrental. The main window is titled 'dvdrental/postgres@PG14_local*' and contains a 'Query' tab with the following SQL query: `select * from city;`. The 'Execute' button (a yellow play icon) is highlighted. Below the query editor, the 'Data Output' tab is active, displaying a table with 8 rows and 4 columns: `city_id` (integer), `city` (character varying), `country_id` (smallint), and `last_update` (timestamp without time zone). The status bar at the bottom indicates 'Total rows: 600 of 600' and 'Query complete 00:00:02.300'.

	city_id [PK] integer	city character varying (50)	country_id smallint	last_update timestamp without time zone
1	1	A Corua (La Corua)	87	2006-02-15 09:45:25
2	2	Abha	82	2006-02-15 09:45:25
3	3	Abu Dhabi	101	2006-02-15 09:45:25
4	4	Acua	60	2006-02-15 09:45:25
5	5	Adana	97	2006-02-15 09:45:25
6	6	Addis Abeba	31	2006-02-15 09:45:25
7	7	Aden	107	2006-02-15 09:45:25
8	8	Adoni	44	2006-02-15 09:45:25

Total rows: 600 of 600 Query complete 00:00:02.300 Ln 1, Col 20